

CERTIFICATE OF LOCATION OF GOVERNMENT CORNER

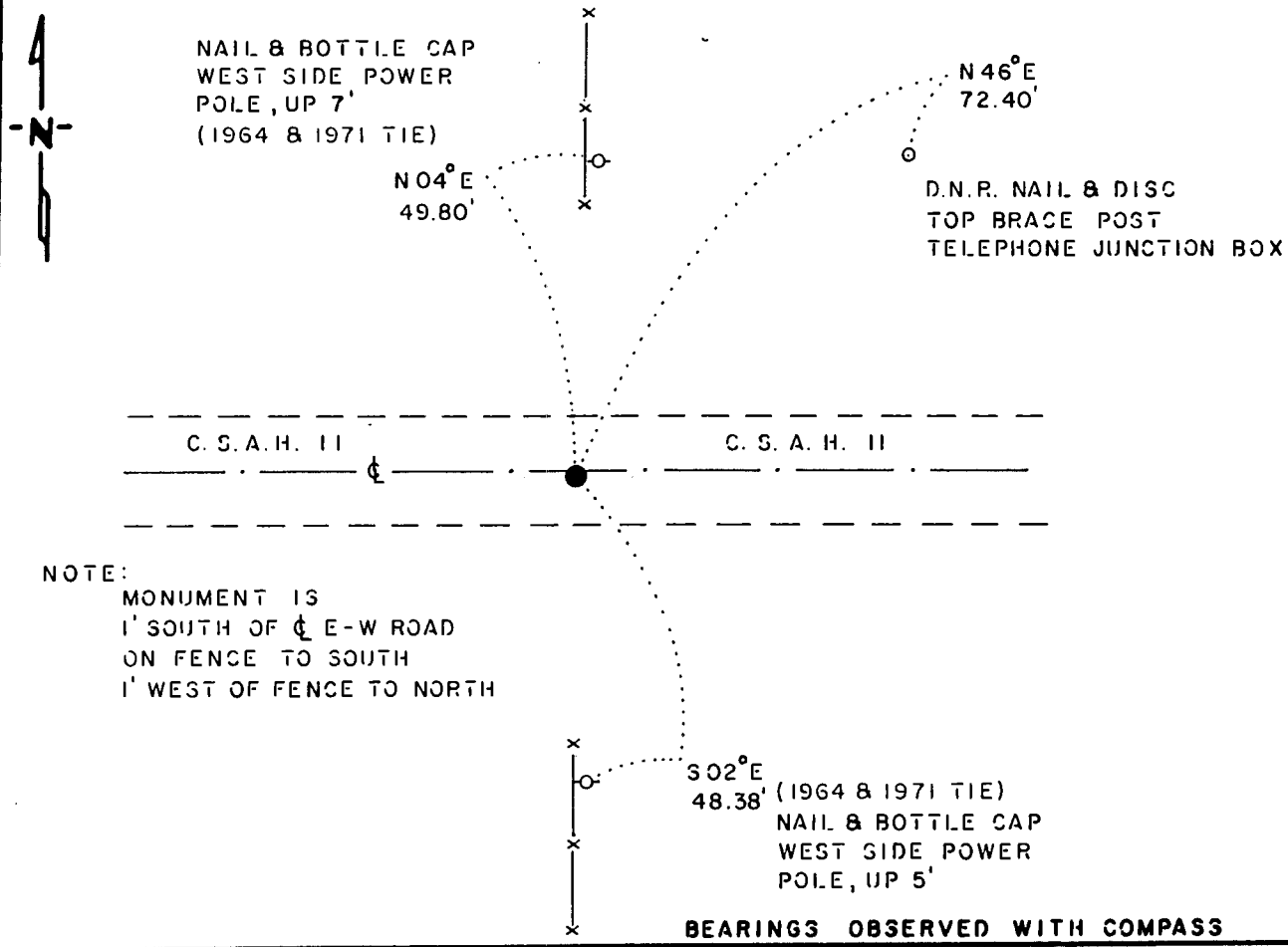
NORTHEAST Corner of Section 23, Township 107 N., Range 40 W., 5th P.M.

STATE OF MINNESOTA, County of MURRAY

At the corner location shown on the sketch:

- On 7-2-85 found a 6" DIAMETER CONCRETE MONUMENT WITH AN "X" ON TOP, DOWN 6.5'
 left monument as found, lowered monument, removed monument (explain)
- On 7-2-85 placed a 1 1/4" x 1 1/4" x 20" PERFORATED STEEL TUBE WITH ALUMINUM CAP STAMPED "D.N.R. SURVEY MARKER", OVER STONE, DOWN 0.3'

SKETCH OF REFERENCE TIES



NOTE:
 MONUMENT IS
 1' SOUTH OF ¢ E-W ROAD
 ON FENCE TO SOUTH
 1' WEST OF FENCE TO NORTH

BEARINGS OBSERVED WITH COMPASS

Statement of evidence relative to this corner location is on back of page.

J. B. M. 7-24-85
G-950

I hereby certify that this document and the data contained herein was prepared by me or under my direct supervision.

Donald R. Pomeroy Jr. 10-9-85
SIGNATURE DATE

Registration No. 17005

Land Surveyor, Professional Engineer

County Surveyor, County Engineer

OFFICE OF THE COUNTY RECORDER
County of _____

I hereby certify that this document was filed in the Co. Recorders office at _____ .M. on the _____ day of _____ A.D., 19 _____

County Recorder _____
By _____, Deputy
DOCUMENT NO. _____

Northeast Corner Section 23, Township 107 North, Range 40 West

This corner was originally established by the U. S. General Land Office survey in 1861. The government notes show corner marked with a wood post set in mound of earth with pits and trench dug around the mound.

In March 1985, the DNR Bureau of Engineering contacted the Murray County Offices of the Recorder and Highway Engineer for corner information.

The following information was obtained from the Recorder's Office:

Surveyor's Record Book A, on Page 77, contains a survey of Section 24 and shows the following:

1898 - J. W. Woolstencraft shows a 4 inch by 4 inch by 12 inch stone in government mound at corner

1934 - F. A. March shows a concrete stone at corner with the following ties:

R.P. tack in corner fence post, north, 33.0 feet

R.P. tack in telephone pole, northwest, 44.3 feet

This information is also contained in an old tie book in the Highway Engineer's Office.

The following information was obtained from the Highway Engineer's Office:

The new tie book shows a 3/4 inch iron pin at corner in 1957 but does not indicate if found or set.

The following information was obtained from the DNR Bureau of Engineering's Office:

A 1964 survey shows that an iron pin was found at corner per Highway Engineer's information. The following ties are shown to corner:

nail and disc in power pole, north, 48.25 feet

nail and disc in power pole, south, 49.7 feet

2633.75 feet from the north quarter corner of Section 24

2677.73 feet from the north quarter corner of Section 23

2643.76 feet from the east quarter corner of Section 14

A 1971 survey shows that ties to corner were obtained from the Highway Engineer. Survey shows that a railroad spike was set for the corner with the following ties:

nail and bottle cap on west side of power pole, south, 49.85 feet

nail and bottle cap on west side of power pole, north, 48.31 feet

nail and bottle cap on east side of telephone pole, northeast, 71.00 feet.

On July 2, 1985, the DNR Bureau of Engineering hired a backhoe operated by Larry Ruppert of Currie to dig for evidence of this corner. A 6 inch diameter concrete monument with an "x" on top was found down 6.5 feet, 0.2 of a foot below the surface of an old bituminous road. A 3/4 inch by 18 inch iron pipe was set down 5 feet over concrete monument and a DNR Survey Marker was set down 0.3 of a foot over iron pipe. Searched for and found record ties as shown on sketch of ties. The concrete monument was found to be:

2633.80 feet from the north quarter corner of Section 24

2645.60 feet from the east quarter corner of Section 14

Accept the concrete monument as the location of the corner.

Traverse information is available from the DNR Bureau of Engineering.